



Eastampton Township News

*12 Manor House Court
Eastampton, NJ
(609) 267-5723
www.eastampton.com*

*Mayor Rob Apgar, Deputy Mayor Dominic Santillo,
Council Member Eddie Besko, Council Member Jay Springer
and Council Member Anthony Zeno*

November 2020

Eastampton Township News is generally published on a monthly basis to provide residents with pertinent information and reminders related to Eastampton Township and the surrounding area. The Township views this as another important means of keeping residents informed about our community.



Observed Holiday

Municipal Offices are closed **Thursday, November 26th** and **Friday, November 27th** in observance of Thanksgiving. Offices will reopen on Monday, November 30th at 8:30 a.m.

Holiday Trash Schedule. All areas normally collected on Thursday, November 26th (Eastampton Farms and Carriage Park) or Friday, November 27th (Venue at Smithville Greene) will be collected on **Monday, November 30, 2020**.



Tax Payments are due **November 1st**. For your convenience we have a lockbox that you may drop your payment in anytime, located next to the back doors of the Manor House. You may also bring your payment to the window on the 1st floor of the Manor House between the hours of 8:30am-4:30pm M-F. If your tax payment is made after **November 10th** you will be subject to Tax Sale in December. **Eastampton Township Now Accepting Online Tax Payments.** Residents can make payments online via ACH, e-check, credit card or debit card by visiting <https://wipp.edmundsassoc.com/Wipp/?wippid=0311>. An administrative fee will be assessed by the company processing the transactions. For additional information, contact the Tax Collector's Office at 609-267-5723, ext. 213.

Tax Sale Information. All unpaid property taxes, sewer or other municipal charges which remain unpaid as of November 10, 2020 are subject to the annual Municipal Tax Sale scheduled for **December 18, 2020**. All outstanding charges must be paid by November 10, 2020 to avoid the scheduled tax sale. Contact the Tax Collector's Office at (609) 267-5723, ext. 213 for additional information.



Township Council Meeting will be held on **Monday, November 16th** at 7:00 pm.

PLEASE NOTE: Meetings will be held virtually/telephonically until further notice. Log on information will be posted on our website along with the Agendas.

Register to Receive All Eastampton Township Announcements. The Township will continue to notify residents of pertinent information through our website, Facebook page and email notification system. To register for the email notification system, "control and click" on the following:
<https://www.eastampton.com/newsletter/subscriptions>

New Buttonwood Park Playground Equipment. In the coming weeks you will see the playground equipment disassembled and removed to make way for new equipment that will be installed in the Spring of 2021. Eastampton Township applied for and was awarded a grant in the amount of \$200,000.00 through the Burlington County Municipal Park Development Program. Please check our website and newsletters for further updates on this exciting news!

Retirement of Detective Doug Townsend



Proclamation

WHEREAS, Douglas Townsend (hereinafter "Detective Townsend") began his career as a Special Officer in the Township of Eastampton in 1998, was hired as a full-time Patrol Officer in 1999 and was promoted to Detective in 2013; and

WHEREAS, Detective Townsend served as a Liaison to the Eastampton Community School where he was also a D.A.R.E, G.R.E.A.T and L.E.A.D instructor, in which he received commendations and letters of appreciation from the school, students, and parents; and

WHEREAS, throughout his career Detective Townsend received many awards including "Officer of the Year" and "Employee of the Year"; and

WHEREAS, on numerous occasions Detective Townsend was detached for extended periods of time to assist the Burlington County Prosecutors Office and federal agencies as part of a joint task force, and represented our agency with dignity and professionalism; and

WHEREAS, his 21 years of faithful service to the Township of Eastampton is regarded with the highest esteem by the Chief of Police, Township Manager, and residents of Eastampton, and he will be greatly missed by all.

NOW, THEREFORE, I, Robert Apgar, Mayor of the Township of Eastampton, County of Burlington, in the State of New Jersey, do hereby congratulate

**DOUGLAS TOWNSEND
ON HIS RETIREMENT
October 31, 2020**

and express gratitude for his many years of service to the Township of Eastampton, and wish him a happy and healthy retirement.

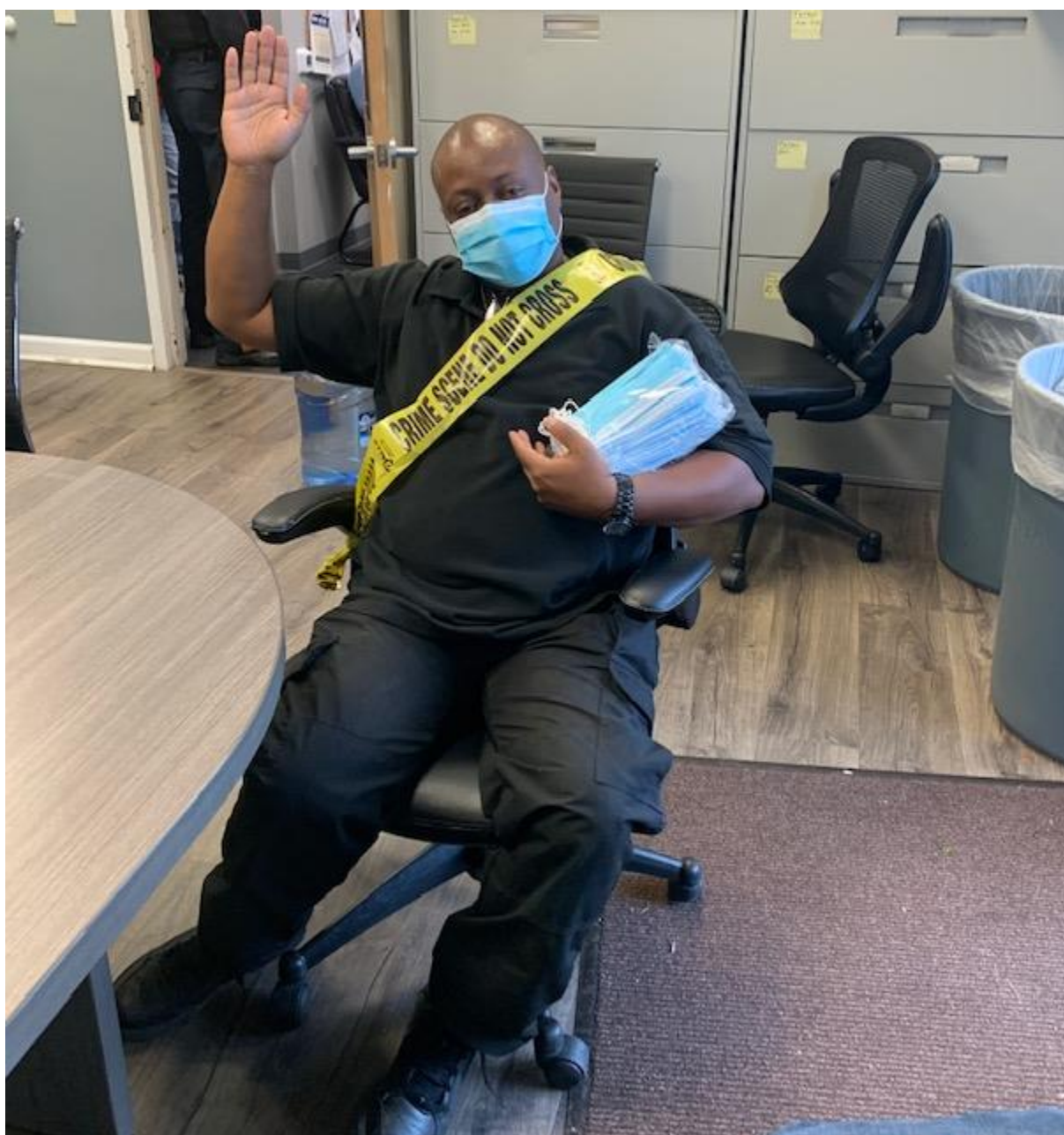
IN WITNESS THEREOF, I have hereunto set my hand and caused to be affixed the great seal of Eastampton Township this 26th Day of October 2020.

ATTEST:

KIM-MARIE WHITE
KIM-MARIE WHITE
Municipal Clerk

ROBERT APGAR
ROBERT APGAR
Mayor

The Eastampton Township Police Department celebrates the career of a fine officer, wishing him all the best in the next chapter of his life. Congratulations to **Detective Doug Townsend** for 21 years of honorable service to the community of Eastampton Township! The Proclamation awarded by the Eastampton Township Council on October 26, 2020 could not possibly contain all of the accomplishments he accumulated throughout his distinguished career. His dedication inspired others to achieve greatness, and he forever helped to change the lives of countless people through tireless efforts and strength of purpose. You will be greatly missed by your Eastampton family!





The General Election is Tuesday, November 3, 2020

Polls are open from 6:00 am to 8:00 pm. ADA compliant voting machine **will only be available** to voters who certify they have a disability that prevents them from voting independently on a paper ballot. Otherwise, you can vote in-person only by paper provisional ballot.

Vote by Mail Voters may apply for a ballot in-person in the county clerk's office anytime up to 3 p.m. on the day before an election. Ballots issued over-the-counter may be taken directly to the Board of Elections on the first floor at 50 Rancocas Road to be voted and turned in.

Voters also have the option of returning their ballot by mail. Voted ballots must be received by the Board of Elections before polls close on the day of the election when delivered in person. A mailed ballot may be postmarked by Election Day and must be received by the Board of Elections within 48 hours to be counted.

Only you, the voter, can bring your ballot to your polling place on Election Day. If another person will be mailing your ballot, bringing it to a secure ballot drop box, or delivering it to the county Board of Elections, **make certain that person completes the "Bearer Portion" on the envelope.** Please note a "Bearer" is limited to only THREE (3) ballots per Election. By law any Bearer Ballots that exceeds the three limit must be REJECTED.

Visit **Vote.NJ.Gov** for full details, drop box and polling locations, and more answers to frequently asked questions. You may also contact your local election officials, or call the Voter Information and Assistance Line at 1-877-NJ-VOTER (1-877-658-6837)

Burlington County Board of Elections is located at 50 Rancocas Rd, 1st Floor in Mt. Holly. Please "control and click" on the following: <http://co.burlington.nj.us/297/Election-Board>

Please see the ballot box locations listing below, as **ballots cannot be dropped off and will not be accepted** at the Municipal Building located at 12 Manor House Court.

ELECTION BALLOT BOXES CAN BE FOUND AT THE LOCATIONS BELOW:

LUMBERTON - LUMBERTON TOWNSHIP BUILDING, 35 MUNICIPAL DRIVE

MT. HOLLY – BURLINGTON COUNTY BOARD OF ELECTIONS, 50 RANCOCAS ROAD

MT. LAUREL – MT. LAUREL MUNICIPAL BUILDING, 100 MT. LAUREL ROAD

BURLINGTON TOWNSHIP – BURLINGTON TOWNSHIP MUNICIPAL BUILDING, 851 OLD YORK ROAD

CHESTERFIELD – CHESTERFIELD TOWNSHIP MUNICIPAL BUILDING, 300 BORDENTOWN CHESTERFIELD ROAD

CINNAMINSON – CINNAMINSON TOWNSHIP MUNICIPAL BUILDING, 1621 RIVERTON ROAD

EVESHAM – EVESHAM TOWNSHIP MUNICIPAL BUILDING, 984 TUCKERTON ROAD, MARLTON

MANSFIELD – MANSFIELD TOWNSHIP MUNICIPAL BUILDING, 3135 RT. 206 SOUTH, COLUMBUS

MAPLE SHADE – MAPLE SHADE MUNICIPAL BUILDING, 200 STILES AVE.

MEDFORD – MEDFORD TOWNSHIP PUBLIC SAFETY BUILDING, 91 UNION STREET, MEDFORD

MOORESTOWN – MOORESTOWN TOWN HALL, 111 WEST 2ND STREET

PEMBERTON TOWNSHIP – PEMBERTON COMMUNITY LIBRARY, 16 BROADWAY STREET, BROWNS MILLS

WILLINGBORO – WILLINGBORO TOWNSHIP MUNICIPAL COMPLEX, 1 REV. DR. MARTIN LUTHER KING JR. DRIVE

These locations are open 24 hours a day and until 8 pm on Election Day.

You may also hand your ballot to a poll worker at your polling place on Election Day, or mail it at the post office. It must be postmarked on, or before November 3rd.



What you need to know to vote in the November 3, 2020 General Election...

HOW CAN I VOTE BY MAIL?



All active registered voters in New Jersey will automatically receive their ballots in the mail. Then it's as easy as **VOTE, SIGN, SEAL, RETURN**. How you return it is up to you.

- 1... Mail:** It must be postmarked on or before 8:00 p.m. November 3 and be received by your county's Board of Elections on or before November 10.
- 2... Secure Ballot Drop Box:** Place your ballot in one of your county's secure ballot drop boxes by 8:00 p.m. on November 3.
- 3... Board of Elections Office:** Deliver your ballot in person to your county's Board of Elections Office by 8:00 p.m. on November 3.
- 4... Polling Place:** Bring your ballot to your polling place by 8:00 p.m. on election day, November 3. Remember only you, the voter, can bring your ballot to your polling place on election day.

WHAT IF I HAVEN'T RECEIVED MY BALLOT?



Every active voter registered in New Jersey should receive a ballot in the mail. If it hasn't arrived by October 12, track your vote-by-mail ballot status online at Vote.NJ.Gov or contact your County Clerk, listed on the County Election Officials page.

CAN I VOTE IN PERSON?



You may choose to vote in person at your polling place, from 6:00 a.m. to 8:00 p.m. on election day, November 3, and you will be provided a **provisional paper ballot**. Accommodations will be made for people with disabilities to use an accessible voting device. Remember, you can return your vote-by-mail ballot at your polling place. Go to Vote.NJ.Gov for your polling place, listed on the Find Your Polling Location page.

HOW DO I REGISTER TO VOTE?



You must be registered by **October 13 in order to vote**. Visit Vote.NJ.Gov for online voter registration or to check your registration status.

WHERE CAN I GET ADDITIONAL INFORMATION OR HELP?



Visit Vote.NJ.Gov for full details, drop box and polling locations, and more answers to frequently asked questions. You may also contact your local election officials, or call the Voter Information and Assistance Line at **1-877-NJ-VOTER (1-877-658-6837)**.



Governor Phil Murphy
Secretary of State Tahesha Way

Vote.NJ.Gov
1-877-NJ-VOTER (1-877-658-6837)





Attention Residents: Drivers are urged to use extra caution and watch for white-tailed deer as deer mating season begins. Peak mating season for deer in New Jersey runs from late October throughout November and into mid-December in all areas of the state. “Deer are involved in thousands of collisions with motor vehicles in New Jersey each year, with the highest number occurring during the fall mating season,” Division of Fish and Wildlife Director Dave

Golden said. “We urge all motorists to be especially alert to the possibility of deer suddenly darting onto roadways and to be aware of things they can do to reduce the risk of a collision and possible serious injury to themselves or their passengers.”

Being extra vigilant for deer will become even more important when daylight saving time ends at 2 a.m. on Sunday, Nov. 3. Most commutes will then align with the periods when deer are most active, and lighting conditions may be the most difficult for driving.

To report a deer carcass on an interstate or state highway, call 1-800-POTHOLE (1-800-768-4653) or go to the New Jersey Department of Transportation’s website to fill out an online form. For roads within Eastampton Township please call the Municipal offices at 609-267-5723 x200 or the Eastampton Police Dept. at 609-261-1717.

Dog Licensing



Residents Are Reminded That All Dogs over 6 Months of Age Are Required to be Licensed Each Year. Dog licenses are valid for the current calendar year, and expire annually on December 31. We will begin next year’s licensing on January 4, 2021. The cost for the month of January is \$10.00 for a neutered/spayed dog and \$13.00 for a non-neutered/spayed dog. A \$2.00 per month additional fee will be assessed for each dog registered after January 31. (You may use our Drop Box located on the back porch of the Manor House to submit and receive your dog license. You can also mail your dog license application and payment **along with a self-addressed stamped envelope to receive your license by mail.**)

Animal Control personnel are permitted to inspect current licenses for all dogs residing within the Township. Licensing information may be obtained in person at the Manor House or by calling (609) 267-5723, ext. 201.

Please note that the **rabies vaccination must be valid through November 1, 2021 by NJ State Law** to obtain the dog license. It is recommended to review your dog's rabies vaccination expiration date now to avoid any delays in your 2021 licensing.

Free Rabies Clinics will be offered on the following dates:

NOVEMBER 7TH:

Delanco Township Public Works Garage located at 750 Coopertown Rd, Delanco from 9am-12pm. Participants must adhere to any/all State and CDC Guidelines for Social Distancing, including wearing of masks at all times. *The date is subject to change due to COVID-19.*

Hainesport Township 1 Hainesport Centre, Hainesport from 10am-12pm.

Pemberton Township will host a drive-thru clinic at the Public Works garage located at 500 Pemberton-Browns Mills Rd, Pemberton from 8am-12pm.

NOVEMBER 21ST:

Westampton Township 710 Rancocas Rd. Westampton from 9am-11am. Please note a form must be completed for the rabies vaccination, and no certificates will be issued during the clinic. Please submit a self-addressed stamped envelope to have the certificate mailed to you, or provide an email address for the certificate to be emailed to you.

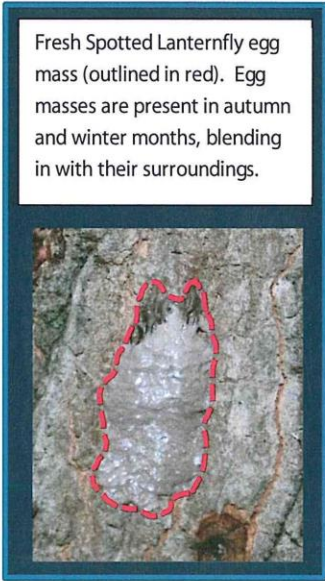
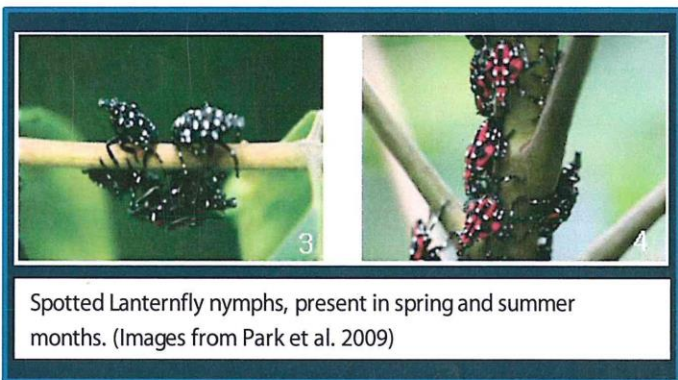
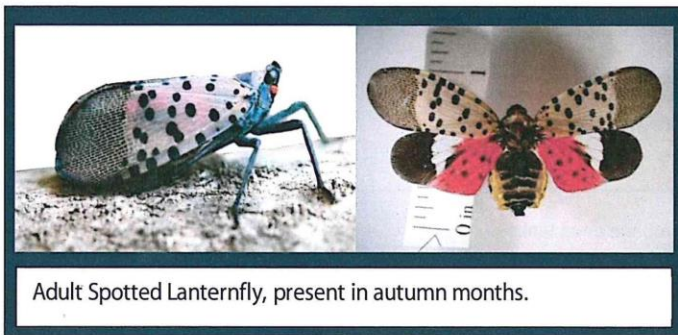
Spotted Lanternfly. Eastampton Township is in a quarantined county, and residents do not need to contact the NJ Dept. of Agriculture about Spotted Lanternfly sightings. However, there are many ways to help control the spread of this pest and try to keep it from traveling to unquarantined counties. Please “control and click” the following: <https://www.nj.gov/agriculture/divisions/pi/prog/spottedlanternfly.html> to visit the NJ Dept. of Agriculture website.

You will find information on treatment and control options, DIY traps, regulations, general information, as well as background and life stages of the Spotted Lanternfly.

Checklist for Residents Living in Spotted Lanternfly Quarantine Areas

IMPORTANT: Before you move outdoor items from the quarantine area, check for spotted lanternfly egg masses, adults, and nymphs. Make sure all items are pest free before you move them. Help keep this pest from spreading.

If you find any of these life stages of the Spotted Lanternfly, remove, devitalize, place in a sealed bag, and dispose of bag in the garbage.



By signing this checklist, I am confirming that I have inspected my vehicle and those items I am moving from the Spotted Lanternfly quarantine area, and do not see any egg masses or insects in or on anything I am moving.

Signature _____ Address _____ Date _____

Please sign, date, and keep this checklist in your vehicle with you use it each time you need it.

For more information,
Visit the New Jersey Department of Agriculture website:
<https://www.state.nj.us/agriculture/divisions/pi/prog/spottedlanternfly.html>





Eastampton Township Leaf Collection

Information. Leaf collection begins the first week of October and will be collected through January, 2021. Residents can rake leaves to the curb for collection. Leaves should be placed in the grass strip between the curb and sidewalk, not in the street. Leaves should not be placed near fire hydrants, sign posts, portable basketball hoops, or telephone poles. Leaves must be free of all trash, sticks, branches, vines, rocks, dirt, and debris. **Mixed material will not be collected.** Additional information including your areas scheduled collection week can be found by visiting the Township website at www.eastampton.com or by contacting the Public Works Department at (609) 267-5723, ext. 210.

Resident Reminder: We need everyone's cooperation to help keep Eastampton neat and tidy. **Please adhere to the schedule of your area for leaf collection.** Leaves are to be placed out **only the week before your scheduled pickup day.** It is especially important that leaves are not placed at the curb many days before scheduled pick up days, as rain makes the leaves wet and difficult to collect, and presents a safety hazard to Eastampton staff and other residents.

SIGN UP 

Burlington County Recycling Program. Get the latest recycling updates on shredding events, schedule changes due to inclement weather and more with the free Recycle Coach smartphone application. The application is available on iTunes and Google Play app stores for Burlington County residents.

Household Battery Recycling. Do Not Recycle Alkaline Batteries, such as AA, C, D, or 9 Volt. Put them in your household trash. Rechargeable batteries come in the same sizes and are used for laptops and toys. Rechargeable batteries include Nickel Cadmium (Ni-Cd), Lithium Ion (Li-Ion) and Small Sealed Lead Acid (SSLA/Pb). Recycle these at Home Depot, Lowes, Staples and other locations listed at www.Call2Recycle.org. ****Never put batteries in your recycling! Batteries have caused fires at recycling centers!***

FALL 2020

PAPER SHREDDING EVENTS

SUNDAY
OCTOBER 18
and
SUNDAY
NOVEMBER 15

Both events are from 9 AM until 1 PM*
RAIN OR SHINE

Burlington County
Resource Recovery Complex (Landfill)
22000 Burlington-Columbus Road
Florence, NJ 08518 (Exit 52A off I-295)

***EVENTS MAY END PRIOR TO 1PM IF
SHREDDING TRUCKS REACH CAPACITY.**

Many of us, cooped up due to Covid-19, sorted old files for confidential papers to shred.

We are here to help with two fall events.

Please follow our guidelines, so that we may safely offer this free service.

– Felicia Hopson,
Burlington County Board
Director



Find Paper Shredding dates and more!



Download the **FREE** app today!



- ✓ You must remain in your car; masks will be required at all times.
- ✓ Paper must be placed in trunk, cargo area or truck bed, easily accessible to staff, who will remove it from the vehicle.
- ✓ Limit of 4 bags/boxes of unshredded paper weighing no more than 10 lbs. each. Shredded paper is also accepted.
- ✓ Confidential files only; no magazines or junk mail.
- ✓ No businesses or non-profits.

BURLINGTON COUNTY RESIDENTS ONLY. IDENTIFICATION REQUIRED.

Questions? Call **(609) 499-1001 ext. 271 or 266**
or email recycle@co.burlington.nj.us



Scan for more information



The U.S. CENSUS BUREAU is hiring Field Representatives in New Jersey!

For more info: <https://www.census.gov/about/regions/new-york/jobs/new-jersey.html>

*Become a Census Bureau
Field Representative!*

U.S. Census Bureau Employment Opportunities



*Openings available in
your area!*

Duty Location: If selected you will work out of your home as your duty station and will be required to travel through your Field Supervisory Area (FSA) on a routine basis.

- Explaining purpose of survey; asking questions as worded.
- Using a laptop to record responses and other vital information. Interviewing respondents for data collection purposes.
- Canvassing and Interviewing respondents for data collection purposes.

Requirements:

- U.S. citizenship; valid SSN; driver's license and insured vehicle(except Manhattan). Desire to work with the public, be self-motivated, and be able to follow detailed instructions.
- Mixed-tour schedule with periods of full-time, part-time, and/or intermittent work to accommodate fluctuating workloads.

Compensation:

- \$16.25 - \$19.44 per hour, plus mileage reimbursement at 57.5 cents per mile.

Please Contact the Recruiting Dept

Email: New.York.Recruit@Census.gov

Phone: [212-584-3495](tel:212-584-3495)

Please include: Full name, e-mail, zip code, and phone number with area code in this format: (xxx-xxx-xxxx)

*****Bilingual and Multilingual***
applicants are encouraged to
apply!**

United States™
Census
Bureau

U.S. Department of Commerce
Economics and Statistics Administration
U.S. CENSUS BUREAU
[census.gov](https://www.census.gov)

This agency provides reasonable accommodations to applicants with disabilities. If you need a reasonable accommodation for any part of the application and hiring process, please notify the agency. The decision on granting reasonable accommodation will be on a case-by-case basis. The Census Bureau does not discriminate in employment on the basis of race, color, religion, sex, national origin, political affiliation, sexual orientation, marital status, disability, age, membership in an employee organization, or other nonmerit factor.



NJDEP Air Quality, Energy and Sustainability



October 9 at 12:24 PM · 🌐

Electronic waste, also commonly known as e-waste, is one of the fastest growing segments of the waste stream. Thankfully, New Jersey residents and businesses with fewer than 50 full-time employees can recycle their computers, monitors, laptops, portable computers, desktop printers, desktop fax machines and televisions for free. 🖥️ ♻️

Learn more about e-waste and where to recycle your e-waste at recycle.nj.gov.

