



# Eastampton Township

## Fire Prevention Bureau

### Office of the Fire Marshal

12 Manor House Court

Eastampton, New Jersey 08060

Office: (609) 267-5723 ext. 203

Cell: (609) 676-6967

Fax: (609) 265-1714

Email: [firemarshal@eastampton.com](mailto:firemarshal@eastampton.com)

[www.Eastampton.com](http://www.Eastampton.com)



## TRUSS CONSTRUCTION SIGNAGE

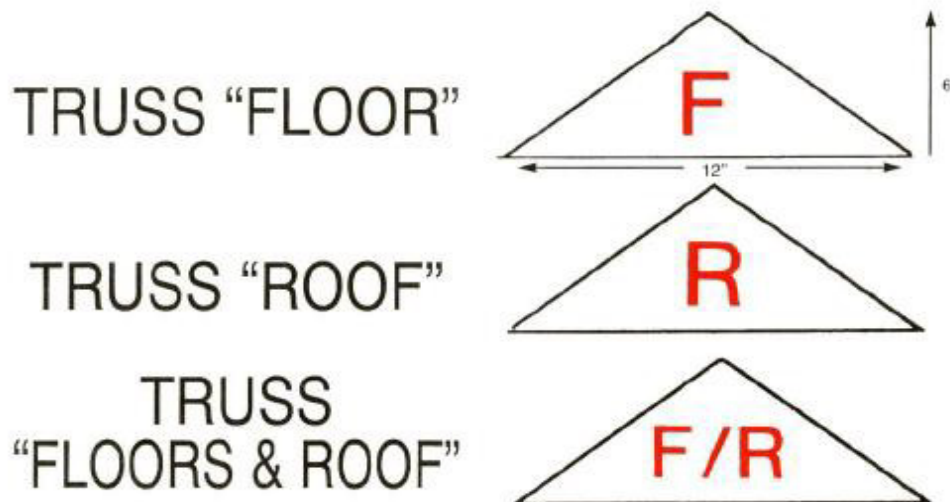
N.J.A.C. 5:70-2.20(a)1

# “TRUSS BUILDING”

## Isosceles Triangle Signs

N.J.A.C. 5:70-2.20 (a)

The emblem shall be of a bright and reflective color, or made of reflective material. The shape of the emblem shall be an Isosceles Triangle and the size shall be 12 inches Horizontally by 6 inches Vertically, with Letters of a size and color to make them Conspicuous, shall be printed on the emblem, as shown in diagram below.



N.J.A.C. 5:70-2.20 (a) 2

The emblem shall be permanently affixed to the LEFT of the main entrance door at the height of between 4 ft. and 6 ft. above the ground, and shall be installed and maintained by the Owner of the building.



# Eastampton Township

## Fire Prevention Bureau

### Office of the Fire Marshal

12 Manor House Court

Eastampton, New Jersey 08060

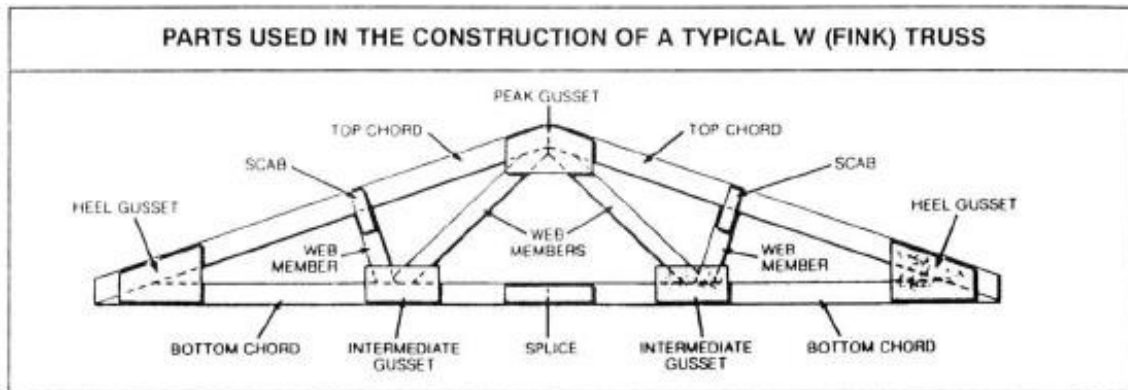
Office: (609) 267-5723 ext. 203

Cell: (609) 676-6967

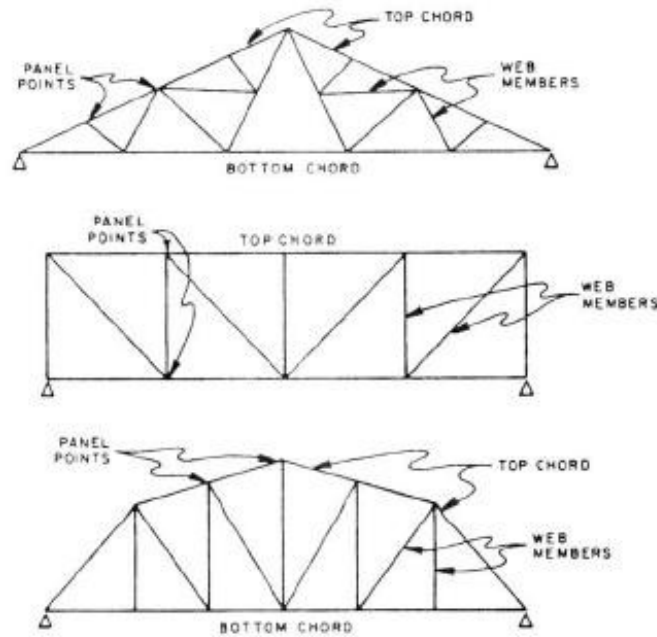
Fax: (609) 265-1714

Email: [firemarshal@eastampton.com](mailto:firemarshal@eastampton.com)

[www.Eastampton.com](http://www.Eastampton.com)



A truss is made up of top chords, bottom chords, and web members tied to the chords with gusset plates. Gussets shown in this drawing are made of plywood.



Three basic types of trusses. There are many designs for trusses, each with its own name.