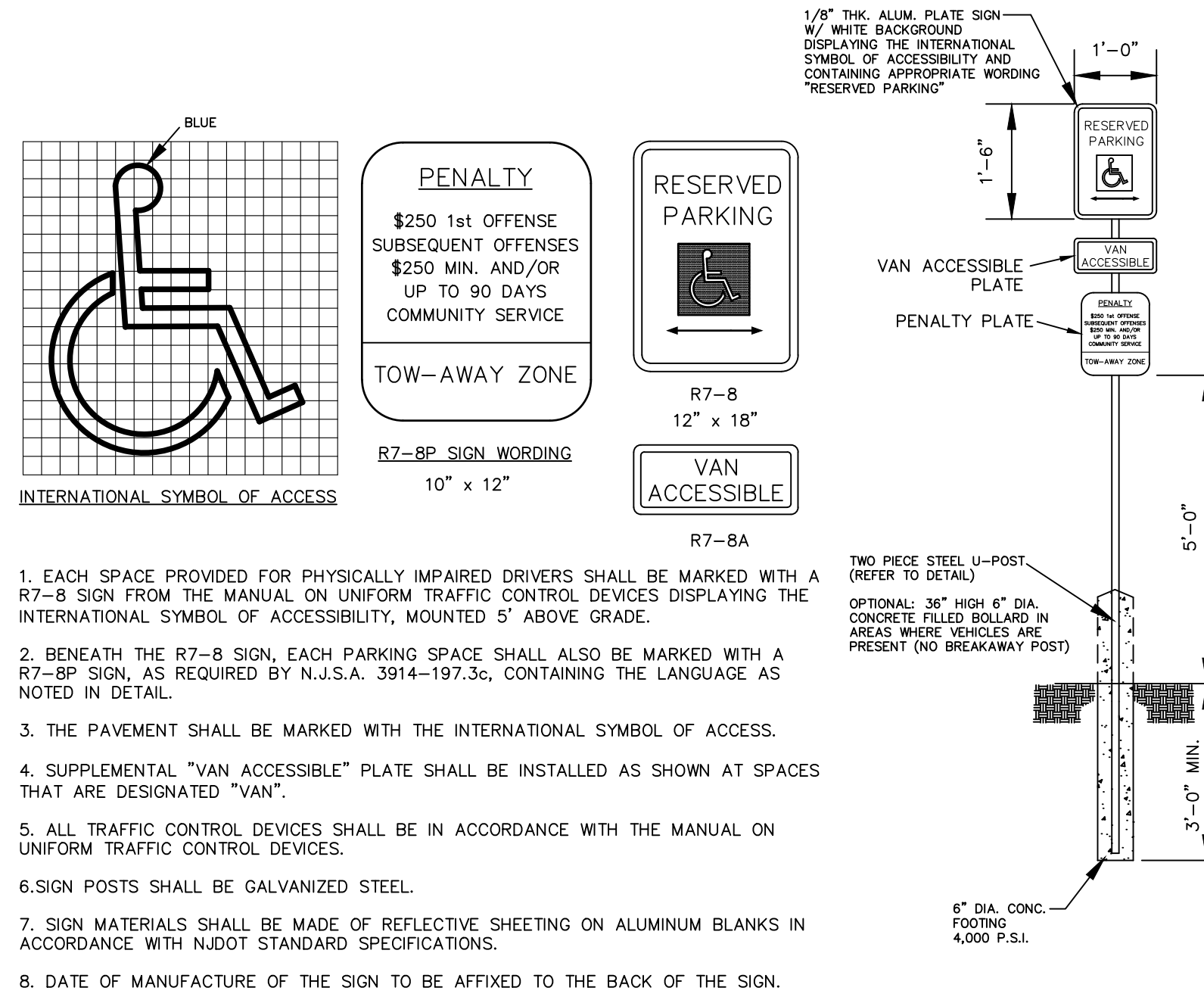




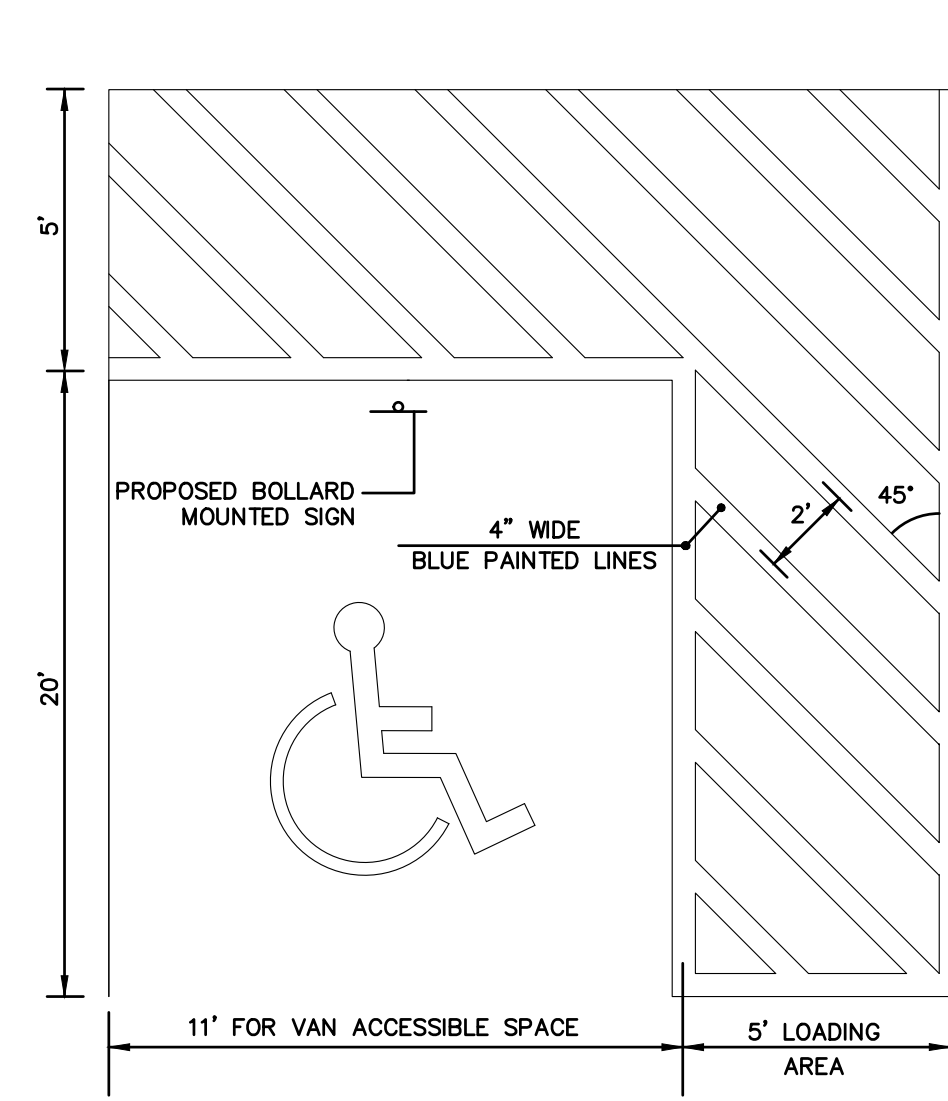
**FACADE SIGN DETAILS**  
NOT TO SCALE

"SLICKS GRAPHICS" - 3.7 FT x 8.9 FT = 32.93 SF  
 "SIGNS AND VEHICLE WRAPS" - 2.2 FT x 20.25 FT = 44.55 SF  
 TOTAL SIGNAGE = 77.48 SF  
 TOTAL FACADE = 917 SF

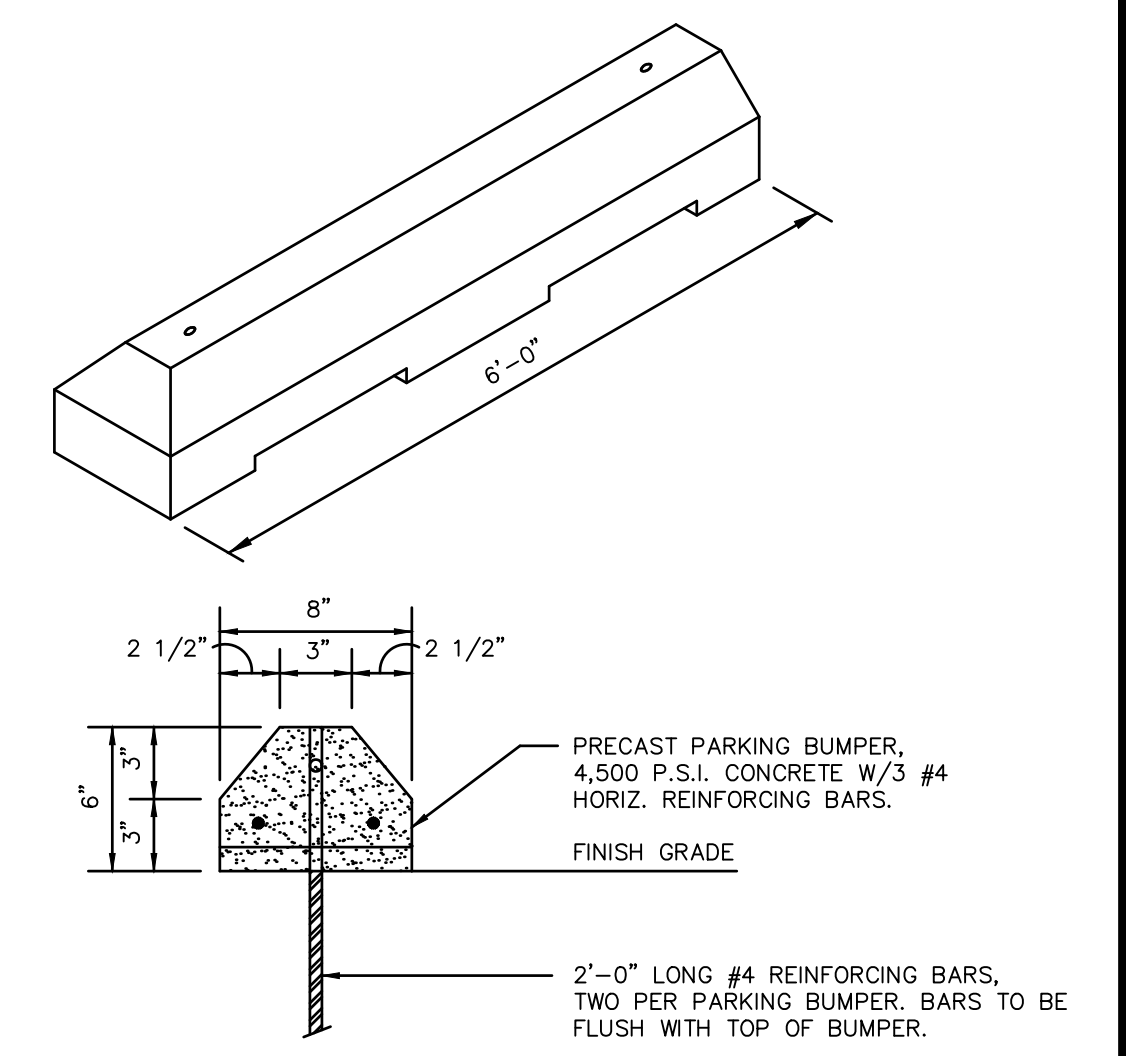
Each garage door is 10'x10'



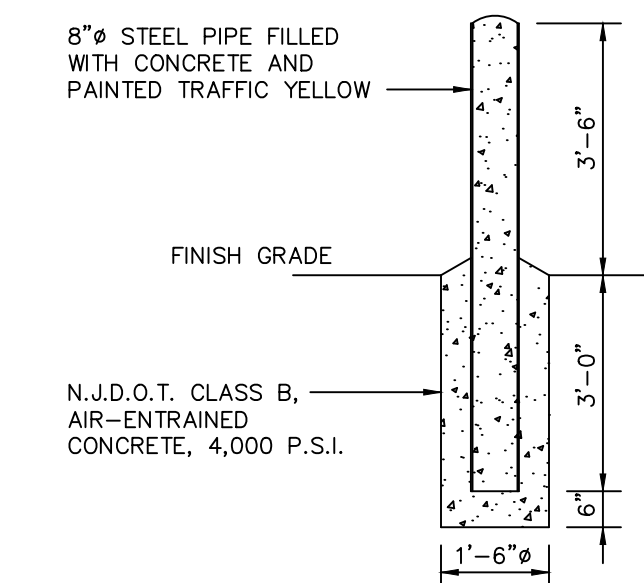
**ACCESSIBLE PARKING SIGN / SYMBOL DETAILS**  
NOT TO SCALE



**ACCESSIBLE PARKING STALL STRIPING DETAIL**  
NOT TO SCALE



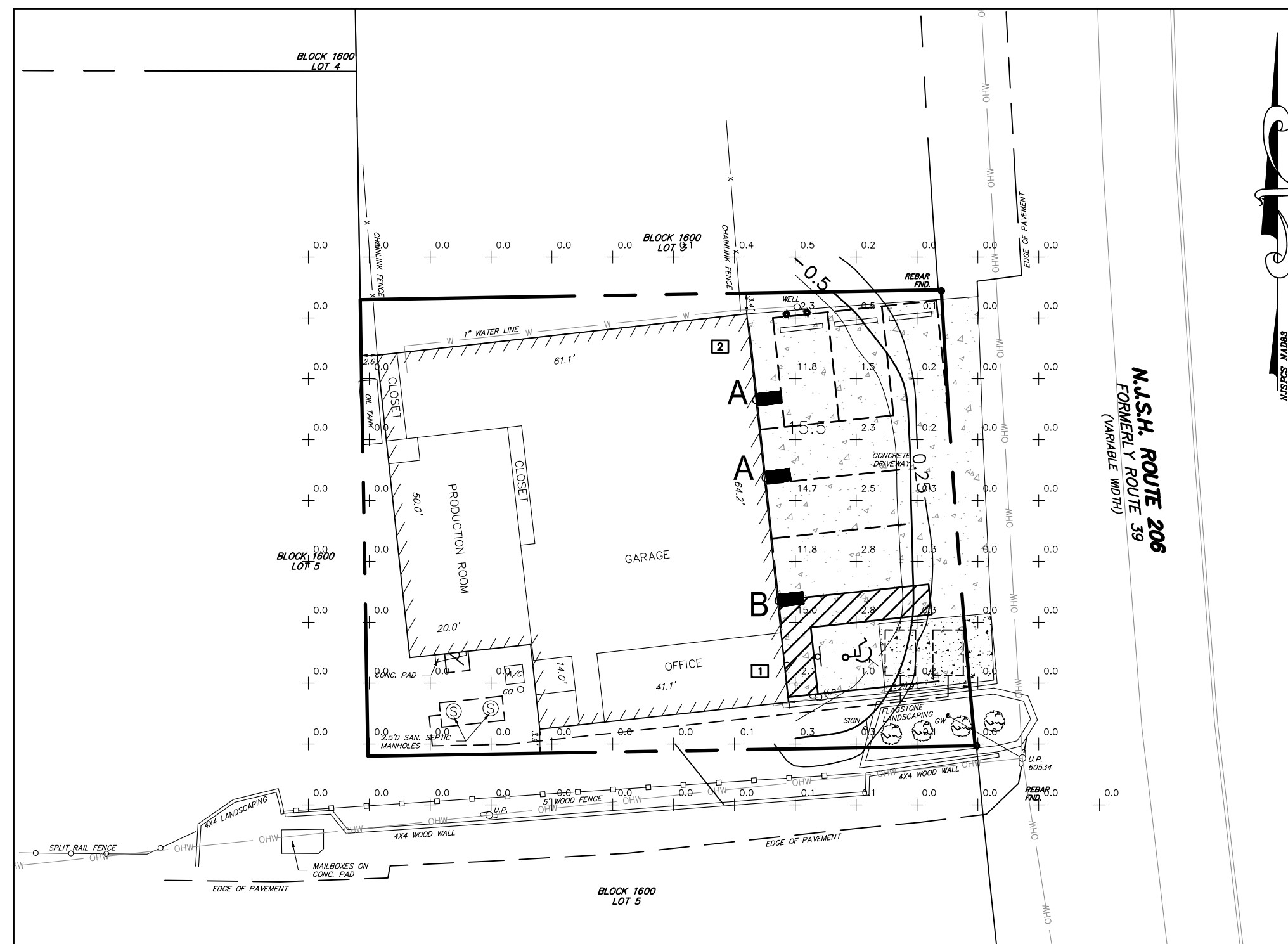
**CONCRETE PARKING BUMPER DETAIL**  
NOT TO SCALE



**STEEL BOLLARD DETAIL**  
NOT TO SCALE

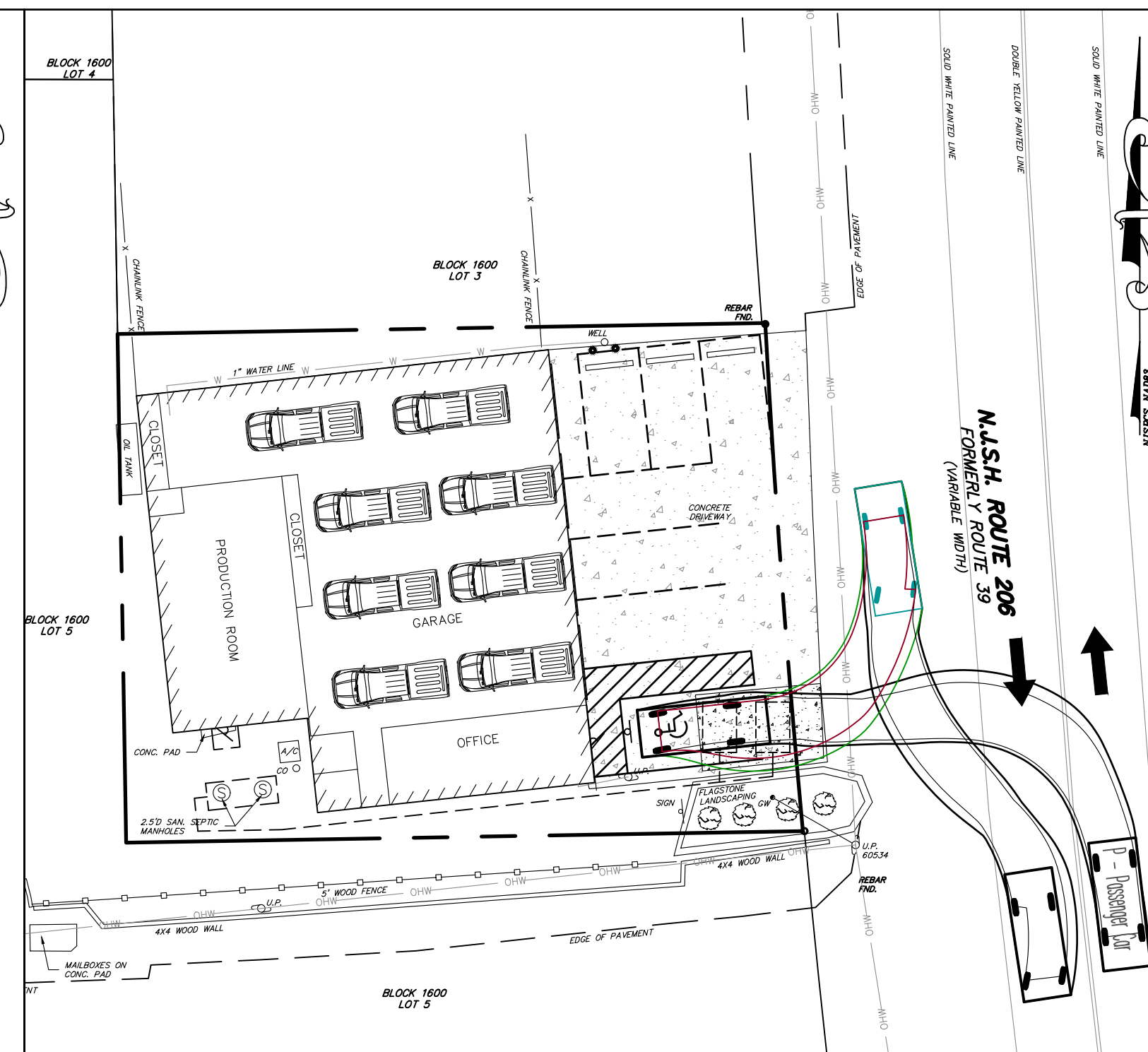


**WALL PACK LIGHT FIXTURE (A) DETAIL**



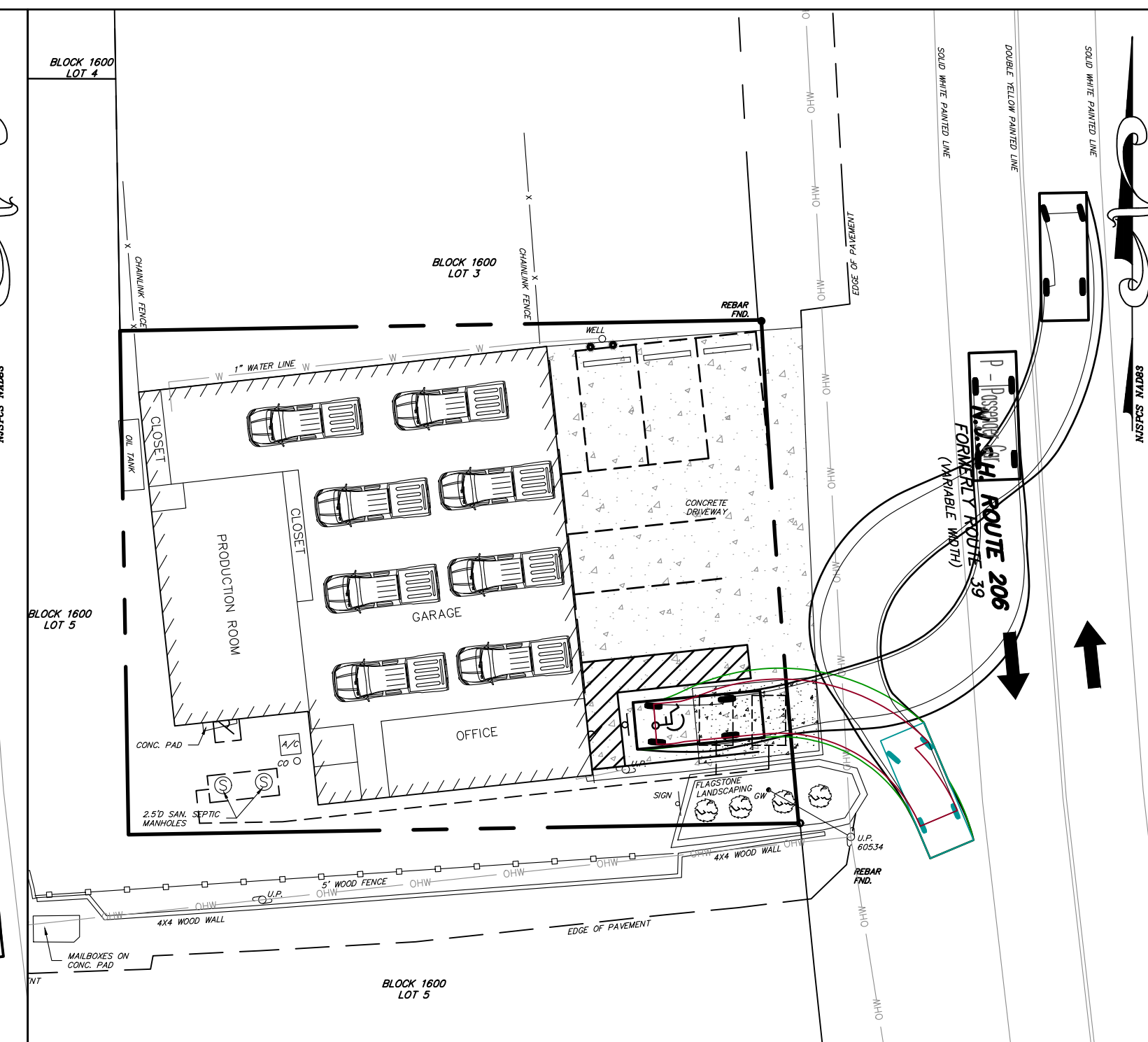
**LIGHTING DETAIL**  
SCALE: 1" = 20'

**LIGHTING NOTES:**  
 1. TYPE 'A' FIXTURES SHOWN ARE EXISTING.  
 2. TYPE 'B' FIXTURES SHOWN ARE PROPOSED.  
 2. TYPE A & B LIGHTING FIXTURES ARE LEDMO WALL PACK FIXTURES, 120W, 5000K, BLACK COLOR, 8 FT MOUNTING HEIGHT.



**VEHICLE MOVEMENT DETAIL**  
SCALE: 1" = 20'

**VEHICLE MOVEMENT NOTES:**  
 1. VEHICLES SHOWN INSIDE BUILDING ARE FOR DEMONSTRATION PURPOSES ONLY AND SHOW POSSIBLE PLACEMENT. VEHICLES CAN BE MOVED INTERNALLY AS NEEDED BY EMPLOYEES.



**VEHICLE MOVEMENT DETAIL**  
SCALE: 1" = 20'

1	12/13/23	INITIAL SUBMISSION	FDR
Rev. No.:	Date:	Description:	By:

**SLICKS GRAPHICS**  
 1309 S. PENNSYLVANIA AVENUE  
 MORRISVILLE, PA 19067

**ROBERT R. STOUT**  
 PROFESSIONAL ENGINEER  
 PROFESSIONAL LAND SURVEYOR  
 N.J. LICENSE No. 38421

ALL INFORMATION PROVIDED ON THIS DOCUMENT IS THE PROPERTY OF THE PROFESSIONAL ENGINEER AND STOUT AND CALDWELL ENGINEERS, LLC. IT IS NOT TO BE COPIED, REPRODUCED OR OTHERWISE DISTRIBUTED AND UTILIZED WITHOUT THE WRITTEN PERMISSION OF BOTH PARTIES. ONLY DOCUMENTS THAT ARE SIGNED AND SEALED BY A LICENSED PROFESSIONAL ENGINEER, SURVEYOR AND/OR PLANNER EMPLOYED BY STOUT AND CALDWELL ENGINEERS, LLC MAY BE RELIED UPON AS BEING AN AUTHENTIC, AUTHORIZED DOCUMENT ISSUED BY STOUT AND CALDWELL ENGINEERS, LLC. STOUT AND CALDWELL ENGINEERS, LLC SHALL NOT BE HELD RESPONSIBLE FOR ANY ALTERATIONS AND/OR MODIFICATIONS MADE BY OTHERS TO SUCH DOCUMENTS.

**STOUT & CALDWELL ENGINEERS, LLC**  
 705 U.S. Route 130 South - P.O. Box 2290  
 Cinnaminson, NJ 08077  
 OFFICE 856.786.2202 FAX 856.786.3050  
 www.stoutcaldwell.com  
 Stout & Caldwell Engineers, LLC, NJ Cert. of Authorization No. 24GA28092700

**CONSTRUCTION DETAILS**  
 BLOCK 1600 - LOT 3.01  
 TAX MAP SHEET #16  
 LAND SITUATE IN  
 TOWNSHIP OF EASTAMPTON  
 BURLINGTON COUNTY - NEW JERSEY

Scale:	AS NOTED	Drawn by:	FDR	Checked by:	RRS	Drawing No.:	CS-1
Job Number:	2304-005			Sheet No.:	2 OF 2		